



Multipoint Grayscale

SDR Analysis

Calibrator Information

Name: Iqorslab
 Phone:
 Address Line 1:
 Address Line 2:
 City:
 State: Zip:
 Calibrator: Stefan Bauer

Calibration Targets

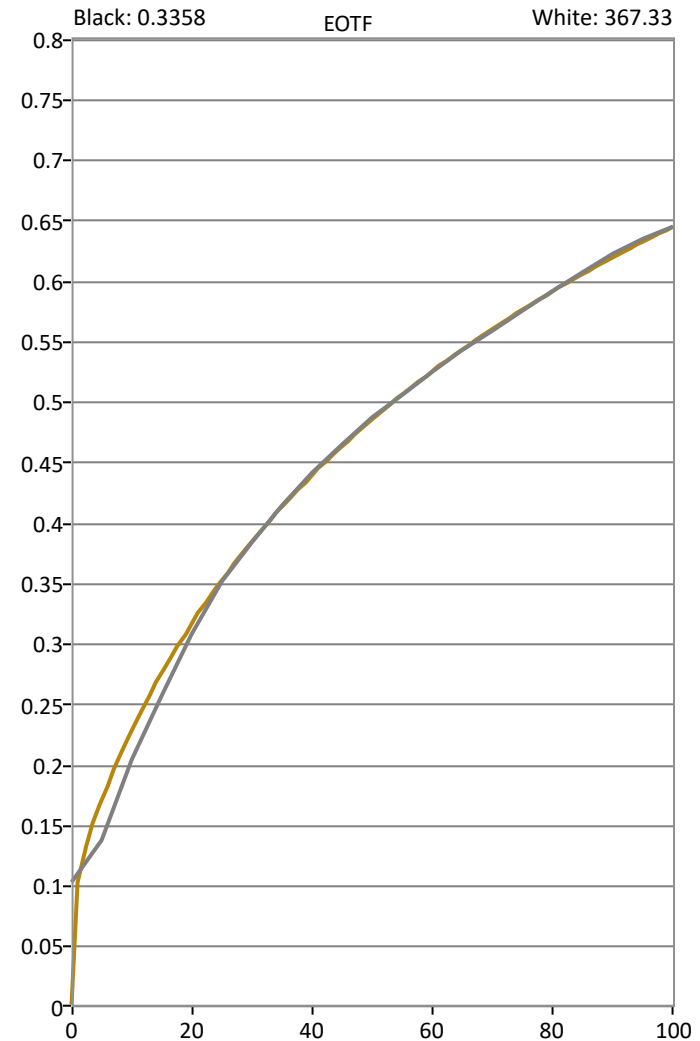
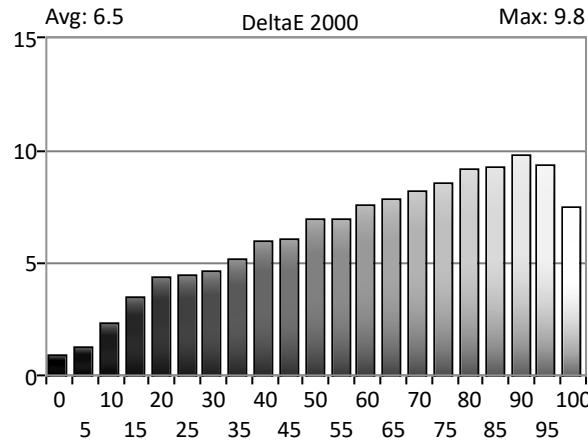
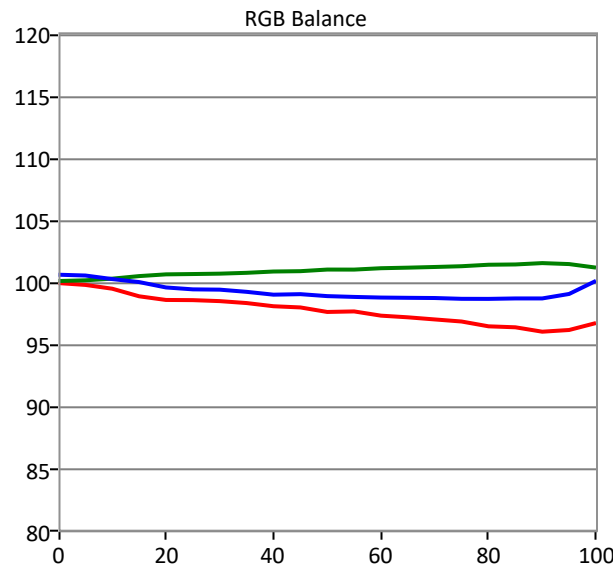
Gamut primaries: DCI P3
 Gamma formula: StudioRGB

Display Information

Display: MSI Optix
 MAG274QRX

Calibration Equipment

Meter: i1 Display Pro/Calibrite ColorChecker 1
 Source: CalMAN Client 3 Pattern Generator



| | 0 | 5 | 10 | 15 | 20 | 25 | 30 | 35 | 40 | 45 | 50 | 55 | 60 | 65 | 70 | 75 | 80 | 85 | 90 | 95 | 100 | | |
|----------------------------|---------|---------|---------|---------|---------|---------|---------|---------|---------|---------|---------|---------|----------|----------|----------|----------|----------|----------|----------|----------|----------|--------|--------|
| Target x:CIE31 | 0.3127 | 0.3127 | 0.3127 | 0.3127 | 0.3127 | 0.3127 | 0.3127 | 0.3127 | 0.3127 | 0.3127 | 0.3127 | 0.3127 | 0.3127 | 0.3127 | 0.3127 | 0.3127 | 0.3127 | 0.3127 | 0.3127 | 0.3127 | 0.3127 | 0.3127 | |
| Target y:CIE31 | 0.3290 | 0.3290 | 0.3290 | 0.3290 | 0.3290 | 0.3290 | 0.3290 | 0.3290 | 0.3290 | 0.3290 | 0.3290 | 0.3290 | 0.3290 | 0.3290 | 0.3290 | 0.3290 | 0.3290 | 0.3290 | 0.3290 | 0.3290 | 0.3290 | 0.3290 | 0.3290 |
| Target Y cd/m ² | 0.0000 | 1.4784 | 3.7945 | 7.1197 | 12.1604 | 18.8328 | 26.5477 | 36.6959 | 48.8066 | 62.9756 | 79.2922 | 96.3327 | 117.0120 | 140.0727 | 163.5360 | 191.3776 | 221.8042 | 254.8803 | 290.6679 | 326.1613 | 367.3306 | | |
| x: CIE31 | 0.2629 | 0.2829 | 0.3018 | 0.3019 | 0.3042 | 0.3062 | 0.3066 | 0.3071 | 0.3072 | 0.3071 | 0.3066 | 0.3073 | 0.3066 | 0.3066 | 0.3064 | 0.3064 | 0.3056 | 0.3057 | 0.3052 | 0.3051 | 0.3048 | | |
| y: CIE31 | 0.2703 | 0.3067 | 0.3299 | 0.3354 | 0.3400 | 0.3397 | 0.3389 | 0.3395 | 0.3406 | 0.3396 | 0.3404 | 0.3400 | 0.3401 | 0.3397 | 0.3395 | 0.3395 | 0.3394 | 0.3389 | 0.3388 | 0.3370 | 0.3325 | | |
| Y cd/m ² | 0.3358 | 0.7547 | 2.5321 | 5.5827 | 10.9341 | 18.4557 | 26.7209 | 37.3439 | 49.8465 | 63.6011 | 80.0172 | 96.3052 | 116.5008 | 139.1294 | 162.2979 | 190.4283 | 222.4780 | 257.9009 | 297.8057 | 334.3031 | 367.3306 | | |
| ΔE 2000 | 0.9535 | 1.3134 | 2.3794 | 3.4980 | 4.3526 | 4.4871 | 4.6788 | 5.2082 | 5.9802 | 6.1117 | 6.9618 | 6.9509 | 7.6175 | 7.8749 | 8.1876 | 8.5357 | 9.1730 | 9.2778 | 9.8496 | 9.3322 | 7.4834 | | |
| ΔE ITP | 74.3049 | 26.2327 | 19.5361 | 14.5420 | 9.6137 | 6.7860 | 6.4096 | 6.6462 | 7.2005 | 6.9611 | 7.6534 | 7.2387 | 7.7683 | 7.7501 | 7.8321 | 7.8677 | 8.2912 | 8.1126 | 8.5665 | 7.9686 | 6.4938 | | |



SDR Analysis

Calibrator Information

Name: Igorlab
 Phone:
 Address Line 1:
 Address Line 2:
 City:
 State: Zip:
 Calibrator: Stefan Bauer

Calibration Targets

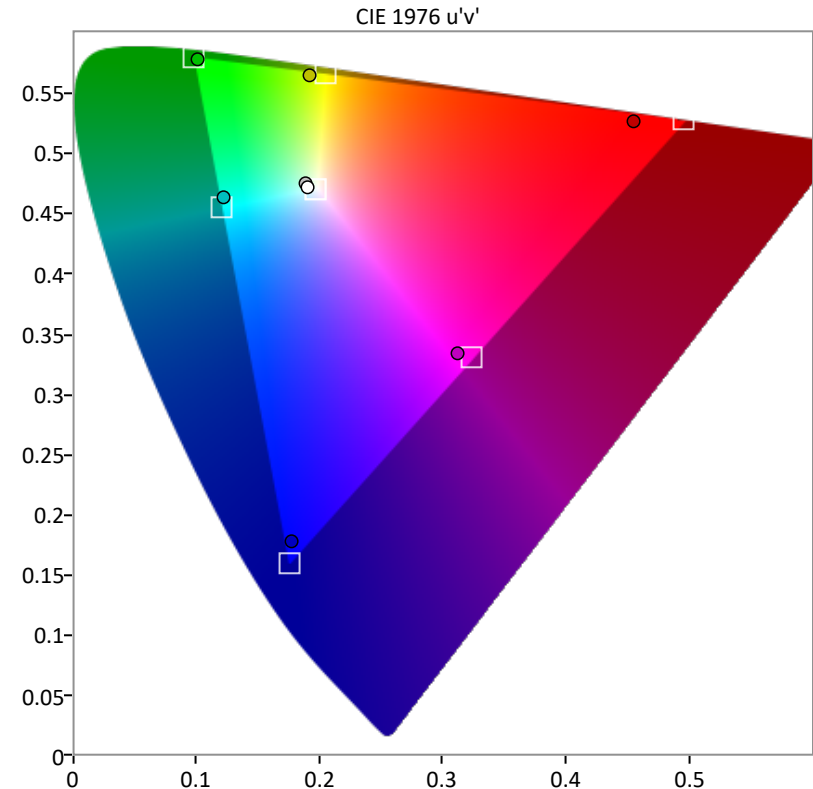
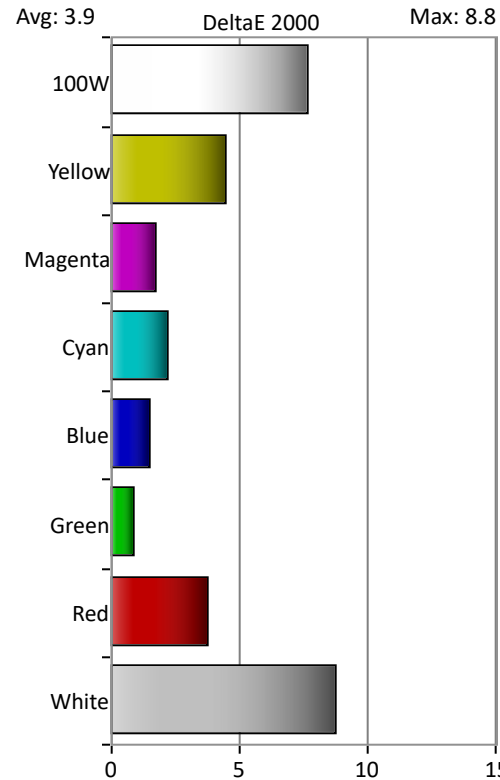
Gamut primaries: DCI P3
 Gamma formula: StudioRGB

Display Information

Display: MSI Optix
 MAG274QRX

Calibration Equipment

Meter: i1 Display Pro/Calibrite ColorChecker I
 Source: CalMAN Client 3 Pattern Generator



| | White | Red | Green | Blue | Cyan | Magenta | Yellow | 100W |
|----------------------------------|----------|---------|----------|---------|----------|---------|----------|----------|
| Target x:CIE31 | 0.3127 | 0.6800 | 0.2650 | 0.1500 | 0.1996 | 0.3362 | 0.4378 | 0.3127 |
| Target y:CIE31 | 0.3290 | 0.3200 | 0.6900 | 0.0600 | 0.3318 | 0.1513 | 0.5359 | 0.3290 |
| Target Y cd/m² | 191.8691 | 43.9359 | 132.7217 | 15.2114 | 147.9332 | 59.1473 | 176.6576 | 368.2739 |
| x: CIE31 | 0.3062 | 0.6447 | 0.2677 | 0.1565 | 0.2067 | 0.3283 | 0.4171 | 0.3047 |
| y: CIE31 | 0.3399 | 0.3301 | 0.6755 | 0.0685 | 0.3433 | 0.1552 | 0.5401 | 0.3328 |
| Y cd/m² | 190.8510 | 41.9427 | 133.9334 | 16.4322 | 150.8803 | 56.3435 | 173.5049 | 368.2739 |
| ΔE 2000 | 8.7637 | 3.7470 | 0.9261 | 1.5539 | 2.2340 | 1.7790 | 4.4664 | 7.6728 |
| ΔE ITP | 8.1172 | 36.8536 | 6.3629 | 15.4641 | 5.6025 | 14.8090 | 13.5327 | 6.6465 |



ColorChecker

SDR Analysis

Calibrator Information

Name: Igroslav
Phone:
Address Line 1:
Address Line 2:
City:
State: Zip:
Calibrator: Stefan Bauer

Calibration Targets

Gamut primaries: DCI P3
Gamma formula: StudioRGB

Display Information

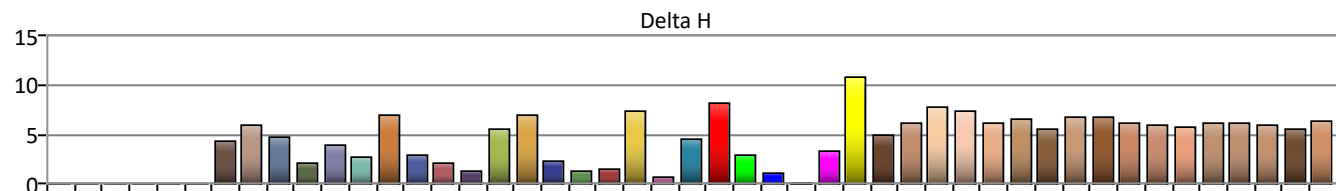
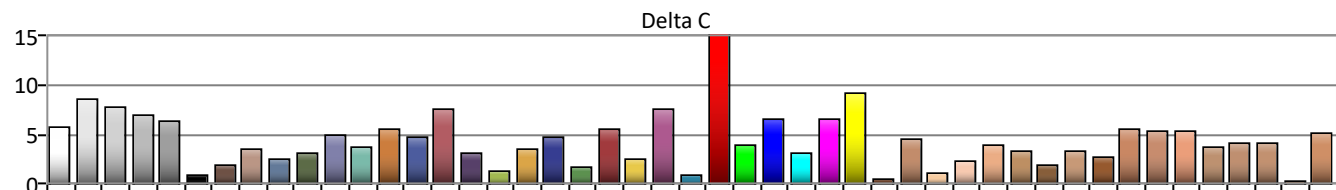
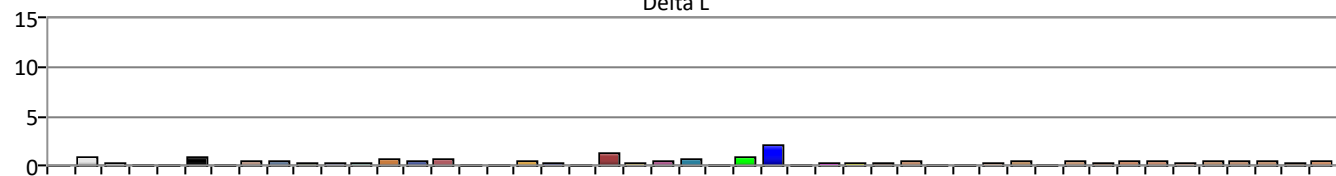
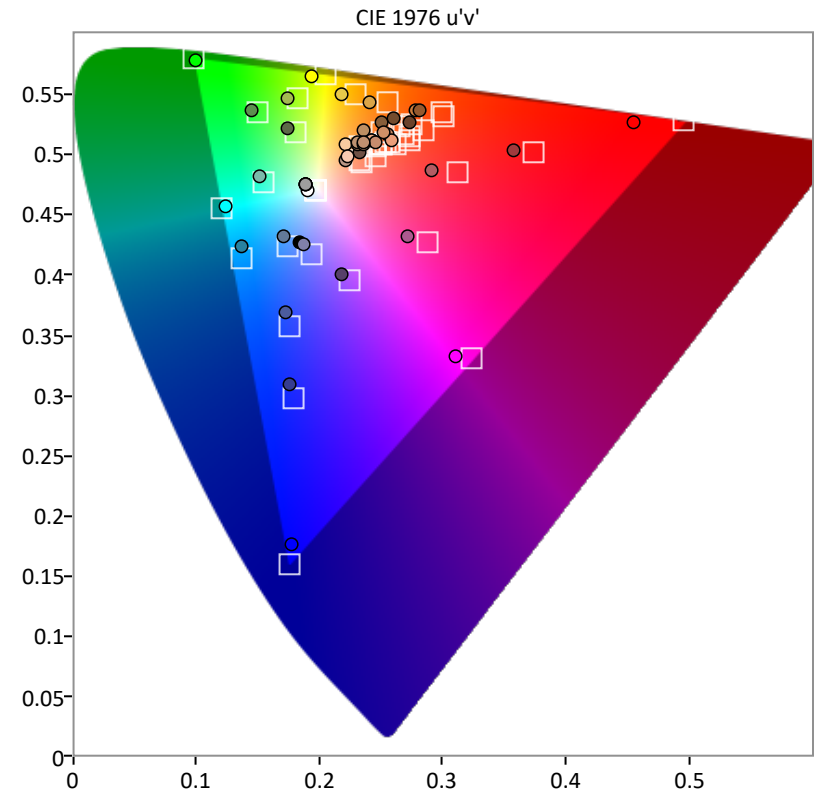
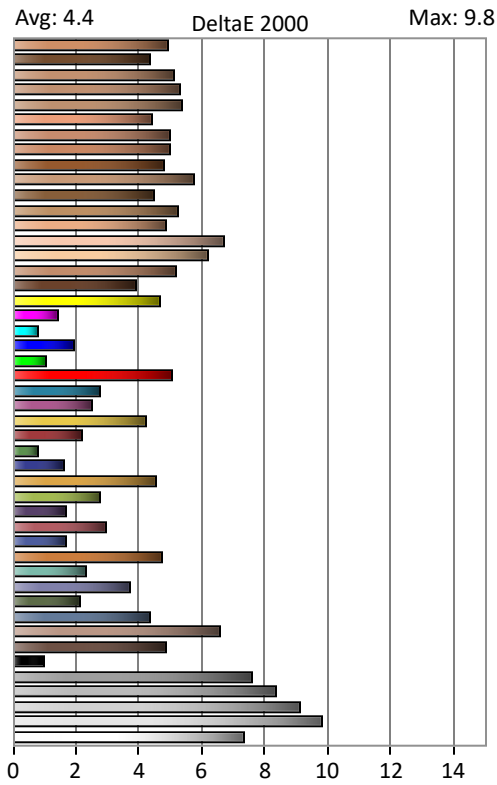
Display: MSI Optix
MAG274QRX

Calibration Equipment

Meter: i1 Display Pro/Calibrite ColorChecker I
Source: CalMAN Client 3 Pattern Generator



17.11.2023





Saturation Sweeps

SDR Analysis

Calibrator Information

Name: Igorlab
Phone:
Address Line 1:
Address Line 2:
City:
State: Zip:
Calibrator: Stefan Bauer

Calibration Targets

Gamut primaries: DCI P3
Gamma formula: StudioRGB

Display Information

Display: MSI Optix
MAG274QRX

Calibration Equipment

Meter: i1 Display Pro/Calibrite ColorChecker I
Source: CalMAN Client 3 Pattern Generator

