



Modern MD272QP

Business & Productivity Monitor

Info kit



Be Your Window To The World

Business & Productivity Monitor

Modern MD272 Series

Be Your Window To The World



reddot winner 2021

Modern MD272 Series



“

Work With Attitude And Live In Freedom. Modern MD272 Series is your window to the world. You can see what you want, do what you love and get what you like.

The 27" monitor with elegant design and 75Hz refresh rate support your idea and your imagination. It's all about what you do right now to make a difference for yourself.

”



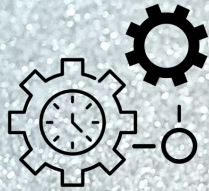
WQHD Shows You More



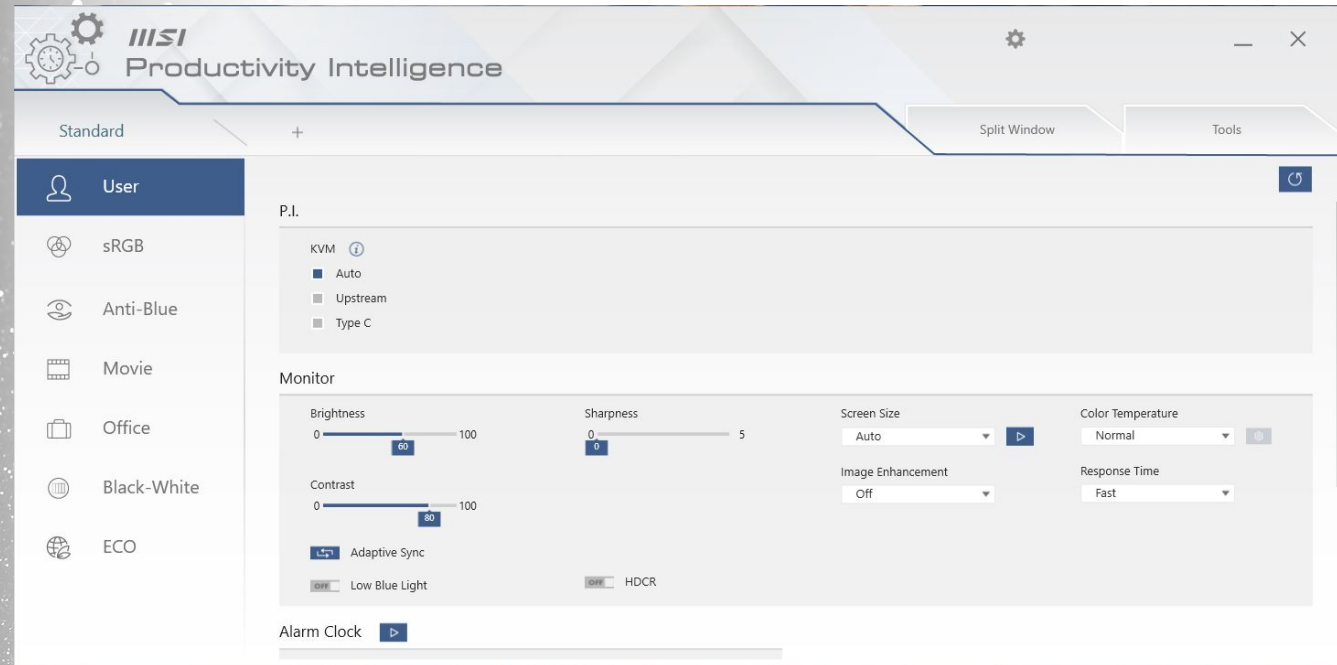
2560 x 1440 (WQHD) resolution increases the viewing & working area that not only to show you more but also bring an improved readability, more vivid three-dimensional effects, and the aesthetic beauty for your life.

Effortlessly Control with Productivity Intelligence (P.I.)

Effortlessly increase your efficiency & enjoy a smart life with the exclusive MSI Productivity Intelligence (P.I.) app which provides the smartest tools with efficient functions to you while working with it everyday



Productivity Intelligence (P.I.)



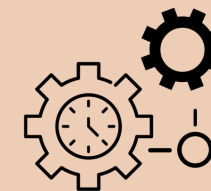
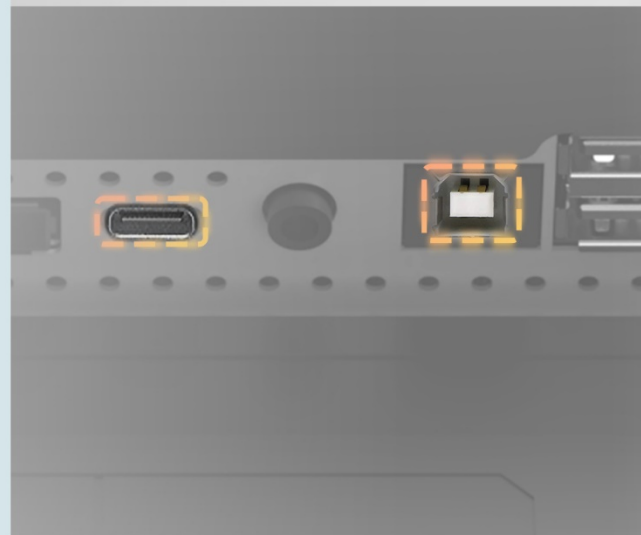
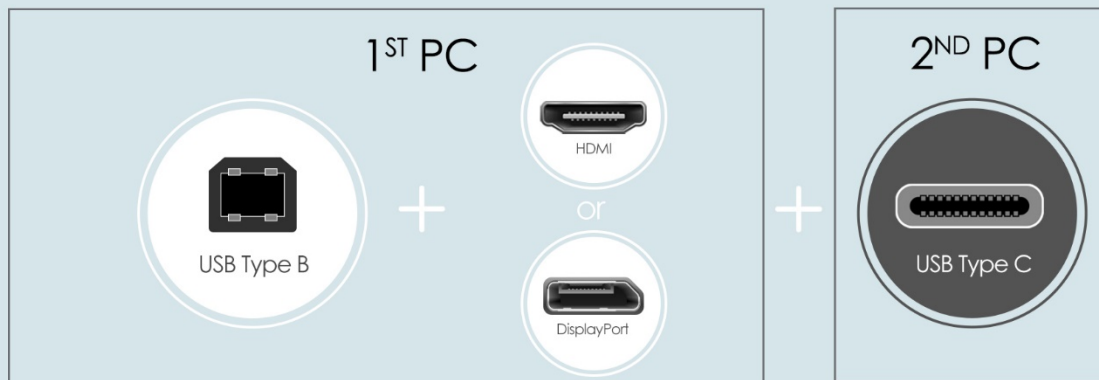
*Please download the latest MSI Productivity Intelligence APP (P.I.) through download page.

Connect Your PC with Productivity Intelligence (P.I.)



Connect USB Type B to A port to your first computer and Modern MD272 series, and then connect the HDMI or DP port to enjoy the most out of Productivity Intelligence App.

Enjoy the convenience of KVM with your second computer or laptop equipped with a USB Type C which simultaneously supports the display and data transmission function.



Productivity Intelligence (P.I.)

Smart

Efficient

Intuitive

*Please download the latest MSI Productivity Intelligence APP (P.I.) through download page.

KVM Switch Design



Switch Effortlessly to Your Work

Improves productivity, saves space, and money by allowing you to use multiple computers with one set of keyboard, monitor, and mouse.

*Please download the latest MSI Productivity Intelligence APP (P.I.) through download page.

*A Type C with display and USB functions are required.

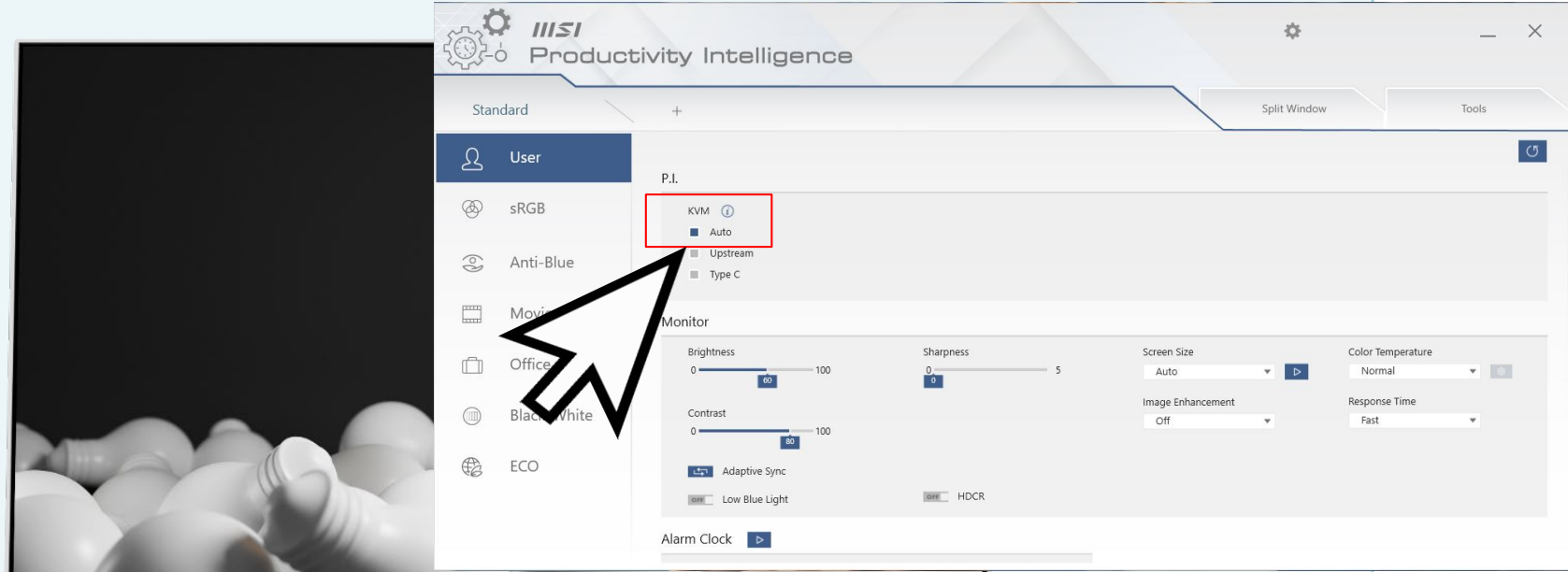
*Please connect the wired keyboard & mouse with USB ports of Modern MD272. Or connect the receiver of the wireless keyboard & mouse with USB port of Modern MD272.



P.I. - KVM Switch



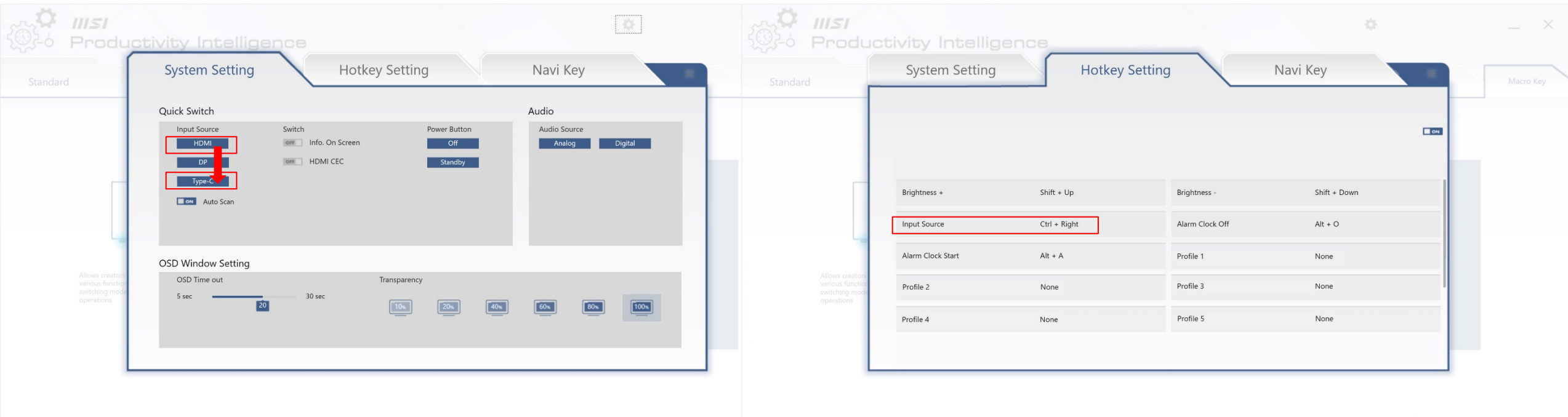
Keep KVM in Auto mode, then you just need to switch the input source and enjoy the convenience of KVM Switch.



KVM Switch with the Easiest Way



Switch between different input sources from your devices with mouse or just with the Hotkey which is set by yourself to enjoy the most efficient productivity with the most convenient & fastest way.



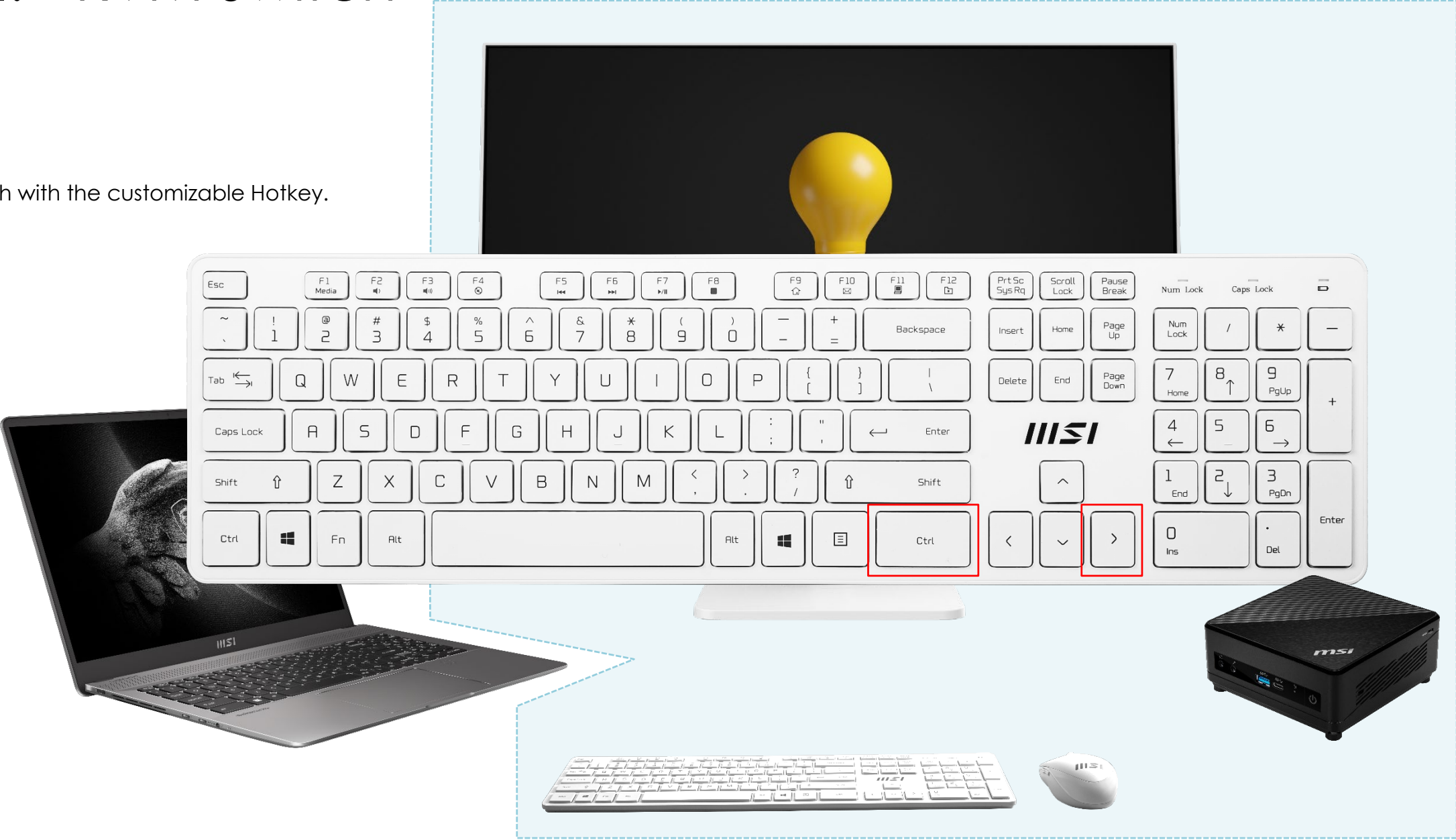
Option 1 – System Setting from P.I.

Option 2 – Customizable Hotkey

P.I. - KVM Switch



Switch with the customizable Hotkey.



P.I. - KVM Switch

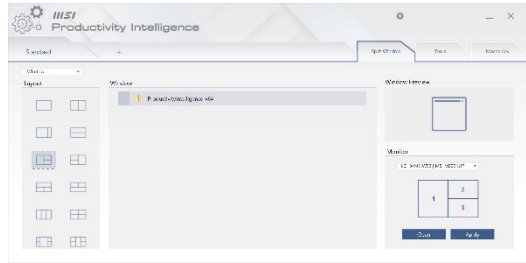


Easily switch between your devices, and control them with just one set of keyboard & mouse which could be wired or wireless set.

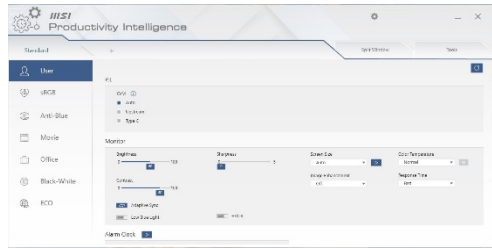




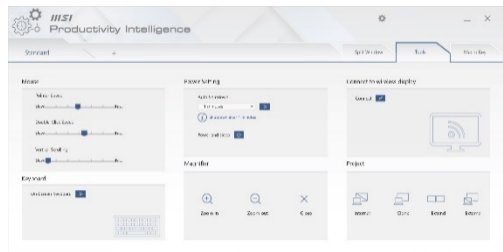
Split Window



Color Mode Setting



Tools



Productivity Intelligence (P.I.)

Ergonomic & Convenient Design

The MSI exclusive software Productivity Intelligence (P.I.) provides the most convenient KVM switch function, the proper display mode, and convenient tools for you while working with it everyday.

TUV Certified – Protect Your Eyes With Less Blue Light Technology



Eye Care



TUV Certified

The Less Blue Light Mode filters visual exposure to the blue spectrum light during daily use scenarios and bring the most comfortable viewing experience for users.



Eye Save Mode

(Less Blue Light mode from OSD setting)

W/O Eye Save Mode

TUV Certified –Protect Your Eyes With Anti-Flicker Technology



Eye Care



TUV Certified

Thanks to MSI Anti-Flicker technology, a stable output current for the monitor is provided. It will help against dry eyes, eyestrain, and lower the chance to need reading glasses in the future.



MSI Anti-Flicker

W/O Anti-Flicker

High Refresh Rate Helps Prevent Eye Fatigue



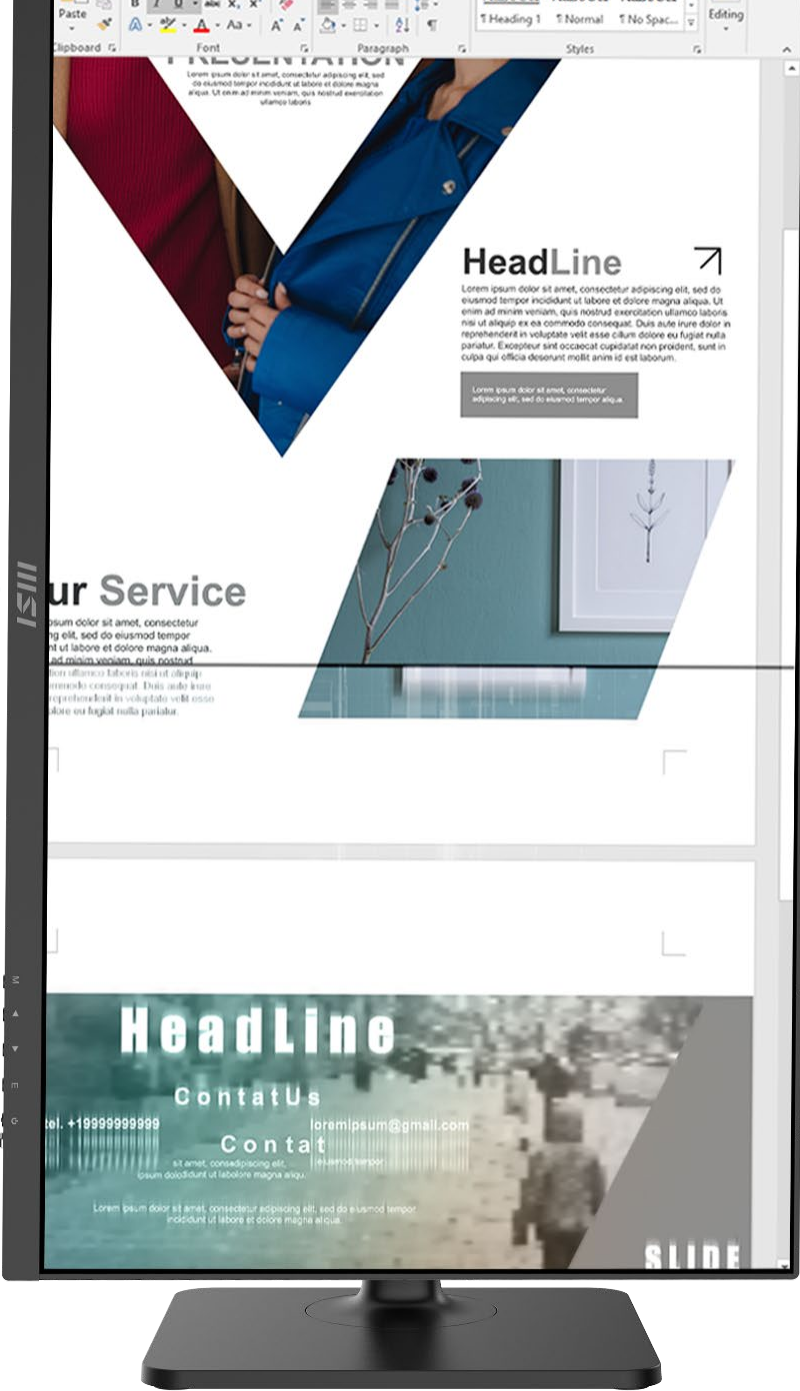
Eye Care

75Hz High Refresh Rate

High refresh rate display provides a better viewing experience. Also, the more images shown in the same time, the less burden will impose to your eyes.



Lower Refresh Rate



The Best Position While Working & Learning At Home

Ergonomic Stand

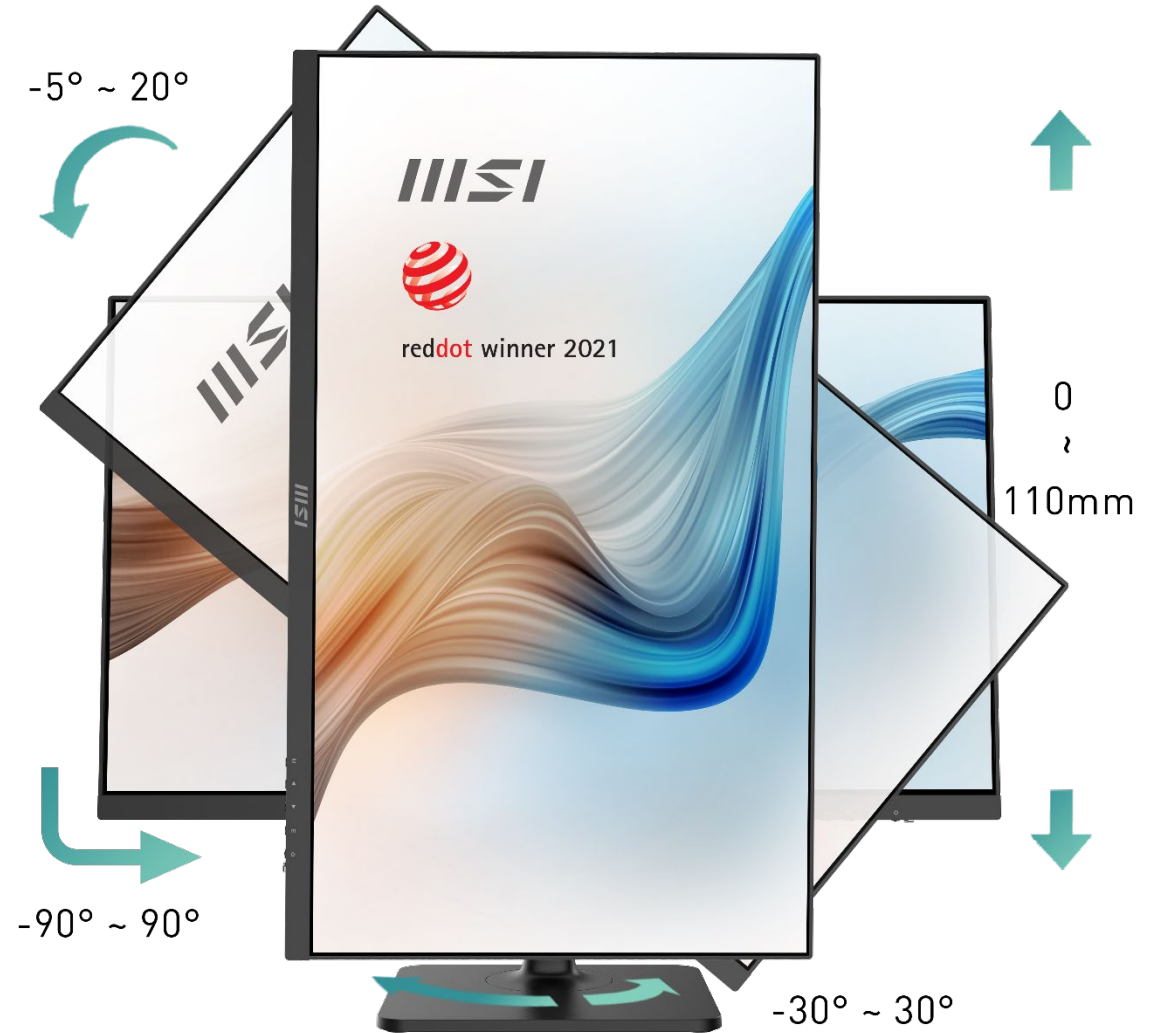
With 4 ways adjustable stand, You are able to learn or manage your E-commerce with a comfortable viewing position and can always adjust the tilt & height according to different situations.

Tilt

Swivel

Height

Pivot





Tool-less

Tool-less Assembly
&
VESA Mountable

Type C Display

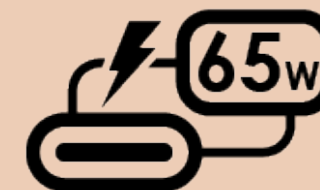
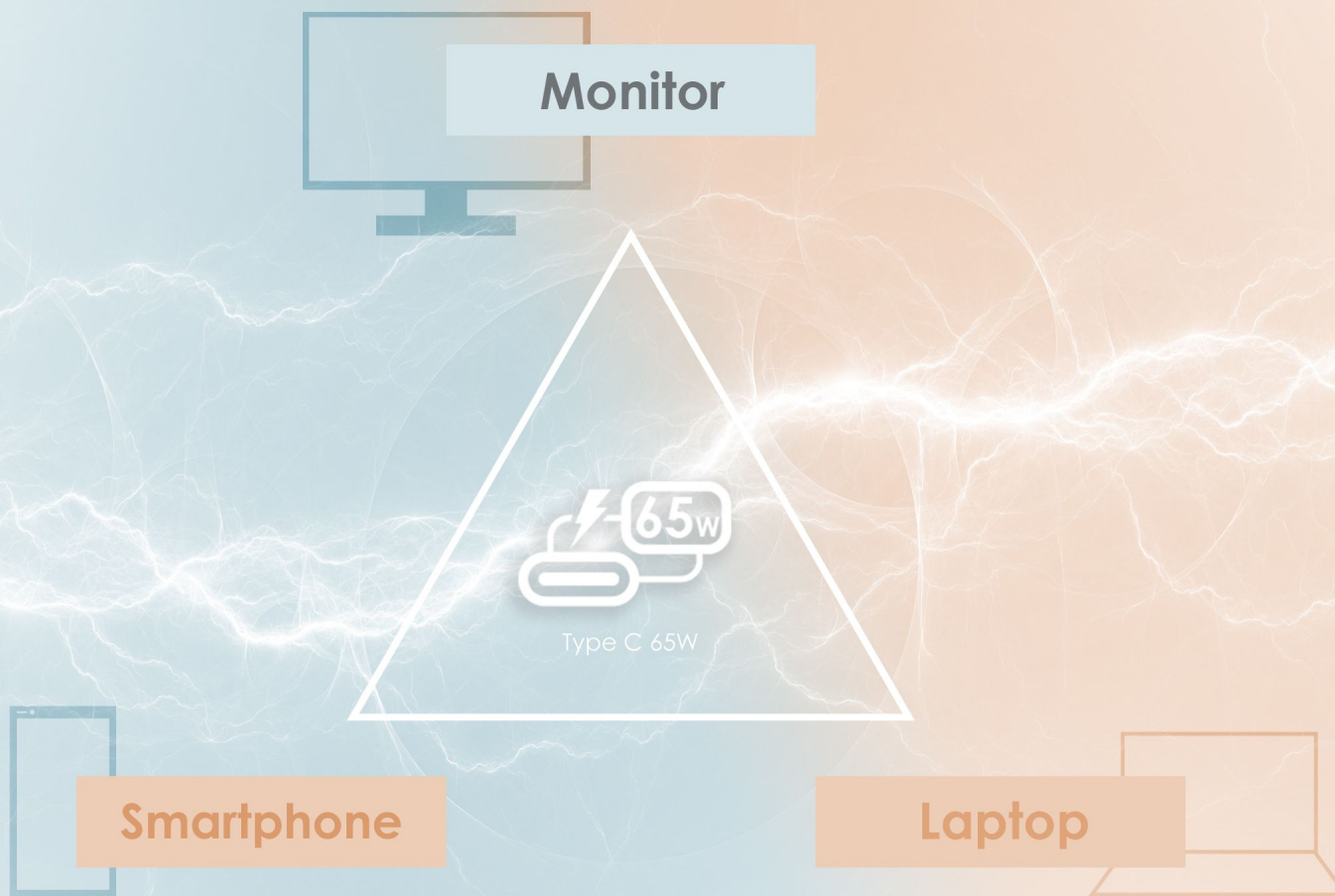


Type C Display



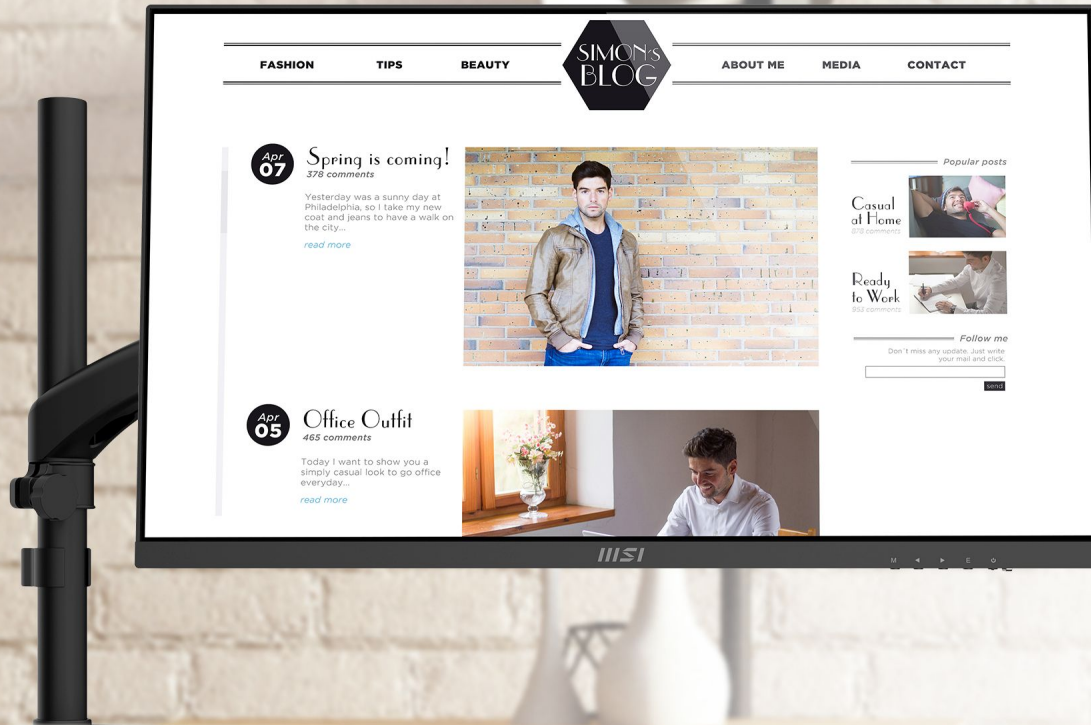
Built in an USB Type-C connection allows you to effortlessly connect to and charge your devices

Type C 65W Power Delivery



Built-in an USB Type-C connection with **65W** power delivery allows you to effortlessly connect to and charge your devices

VESA Mountable Design



Mount With MSI VESA Arm

Enjoy a clean cable management with the MSI VESA Arm [MT81](#) which support the VESA standards, you can share any information or e-learning material with family at home or in the office.

Enjoy Your Life with Dual Display



Enjoy dual display & a clean cable management with the MSI MT81 which supports the VESA standards, you can share any information or e-learning material with the most efficient way.

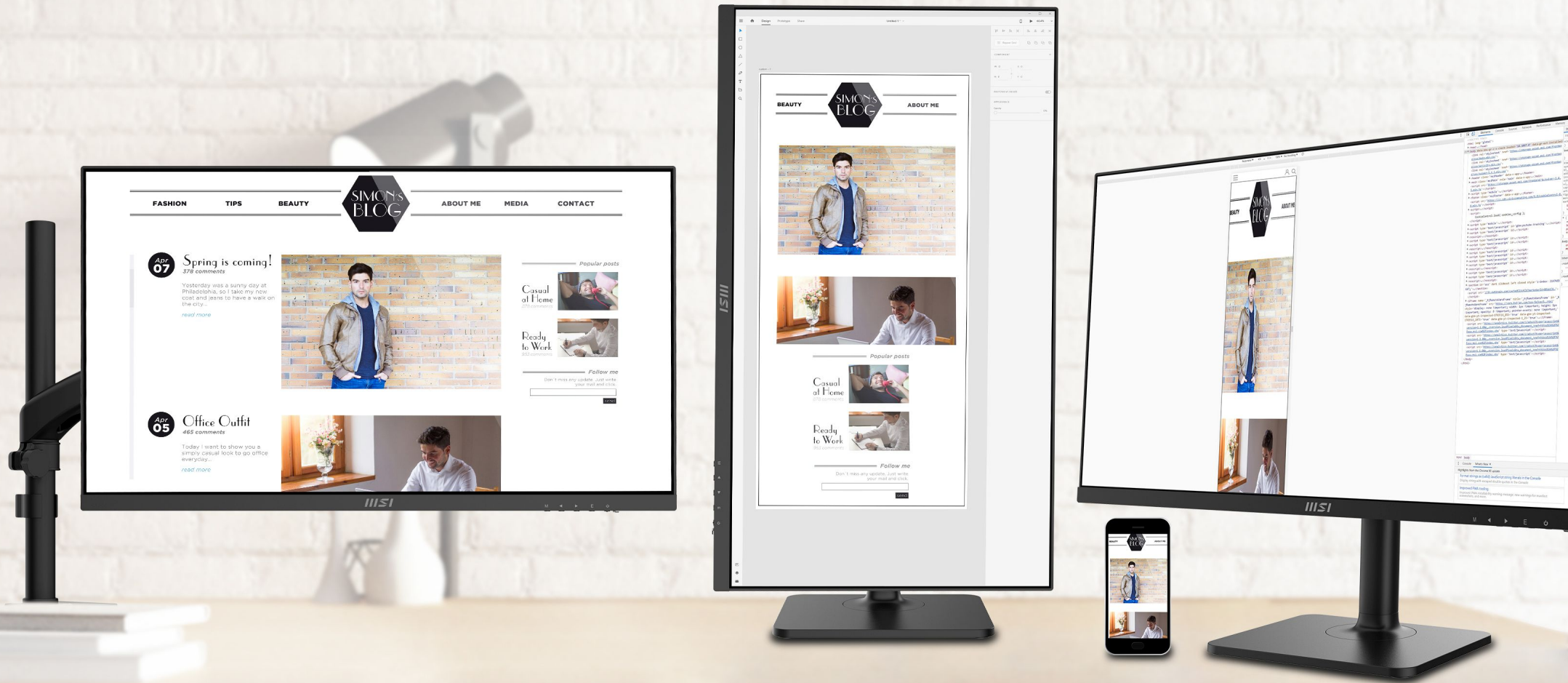


Mount With MSI VESA Arm [MT81](#)

E/M -Commerce with Triple Displays



Preview and manage your E-Commerce or M-Commerce materials with triple displays.



Multiple Sources Supported for Your Different Devices



Multiple input design (HDMI, Type-C and DP) provides the best efficiency for your learning or working from home with multiple devices.

IPS Panel with Wide Viewing Angle



Instantly optimize the screen colors and brightness to ensure that you enjoy every detail at its best while creating your own on-line video.

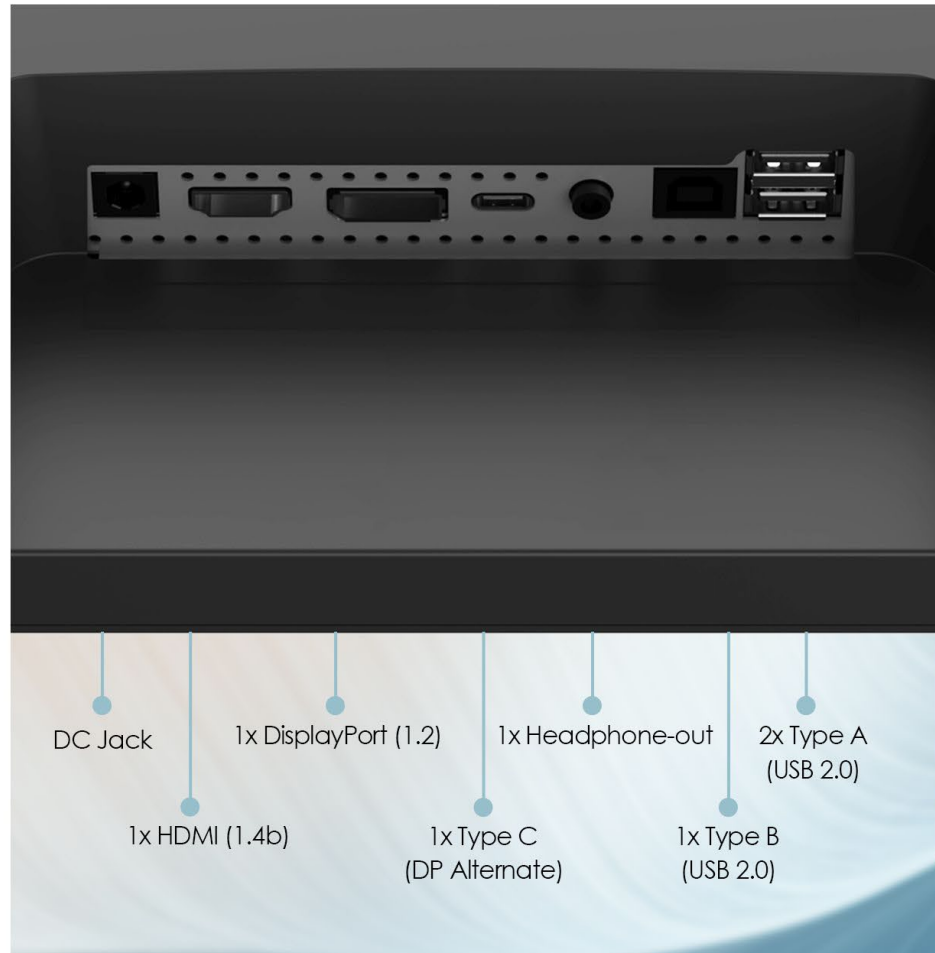
Built-in Speakers

Two Built-in Speakers

With two built-in speakers, users were allowed to listen to audio files, to attend online conferences, or to edit videos at any time without carrying an external speaker or wearing a headphone.



Modern MD272QP: I/O Overview





Modern MD272QP Specification

Type / Size	27"
Colorway	Black
Active Display Area (mm)	596.736(H) x 335.664(V)
Curvature	Flat
Panel Type	IPS
Resolution	2560 x 1440 (WQHD)
Pixel Pitch	0.2331(H) x 0.2331(V)
Aspect Ratio	16:9
Brightness (nits)	300 cd/m ²
Contrast Ratio	1000:1
Refresh Rate	75Hz
Response Time	4ms (GTG)
View Angles	178°(H) / 178°(V)
sRGB	95% (CIE 1976)
Surface Treatment	Anti-glare
Display Colors	16.7M
Color Bit	8 bits
Video Interface	1x HDMI (1.4b) 1x DisplayPort (1.2) 1x Type C (DP Alternate) 1x Headphone-out
USB	1x USB 2.0 Type B 2x USB 2.0 Type A
Speaker	2x 2W
Power Type	External Adaptor (19V 5.79A)
Adjustment (Tilt)	-5° ~ 20°
Adjustment (Swivel)	-30° ~ 30°
Adjustment (Pivot)	-90° ~ 90°
Adjustment (Height)	0 ~ 110mm
Kensington Lock	Yes
VESA Mounting	75 x 75 mm
Dimension (W x D x H)	613.5 x 401.5 x 200.81 mm (24.15 x 15.81 x 7.91 inch)
Weight (NW / GW)	5.85 kg (12.90 lbs) / 8.1 kg (17.86 lbs)
Dimension (W x D x H) With Carton	893 x 167 x 464 mm (35.16 x 6.57 x 18.27 inch)
Note	HDMI: 2560 x 1440 (Up to 75Hz) DiaplayPort: 2560 x 1440 (Up to 75Hz) Type-C: 2560 x 1440 (Up to 75Hz)



Successful & Stylish B2B projects

Over the past years, MSI has successfully supported Countless of commercial projects, including government tenders, restaurant & hotel facilitation, shopping mall navigation projects, school & university developments and professional office projects.

Find more details about many of these projects on:

<https://www.msi.com/pro-projects/global>

