

# ThinkStation P620

LIMITLESS POSSIBILITIES



## GAME CHANGING POWER, RELIABILITY, AND SPEED

The ThinkStation P620 is the only AMD Ryzen Threadripper PRO powered workstation, delivering game-changing power and speed with the largest core count professional workstation: up to 64 cores and 4.5GHz. Perfect for those who demand more power for multi-threaded applications, the P620 combines Lenovo's legendary reliability, experience and customer-driven innovation with professional manageability and enterprise-class support.

Purpose built with the speed and configurability you crave, this powerhouse workstation offers PCIe Gen4 for increased storage speed and expandable memory, as well as unmatched NVIDIA® graphics support, and 10GB of built-in ethernet—a new standard in connectivity.

## FEATURES



AMD Ryzen™ Threadripper™ PRO Processor



Up to 2 NVIDIA RTX™ A6000 graphics cards



Up to 20TB of storage



Up to 1TB 3200MHz ECC memory



Gen4 support for PCIe slots and M.2 storage



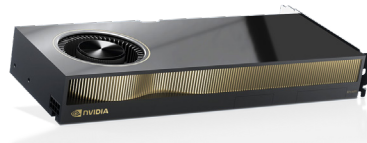
Air cooled thermals

Lenovo

## Lenovo Options & Accessories



ThinkVision P27q-20



NVIDIA RTX™ A6000



4TB Enterprise HDD

## Lenovo ThinkStation P620 Specifications<sup>^</sup>

### PERFORMANCE

#### Processor

AMD Ryzen™ Threadripper™ PRO  
(up to 4.5GHz; up to 64 Cores)

#### Chipset

AMD 2019 Premium Chipset BXB-B

#### Operating System

Windows 11 Pro  
Windows 10 Pro (preinstalled through  
downgrade rights in Windows 11 Pro)  
Ubuntu® Linux<sup>91</sup>  
Red Hat® Enterprise Linux® (certified)

#### Graphics

Up to 2 NVIDIA RTX™ A6000

#### Total Memory

Up to 1TB DDR4, 3200MHz

#### Memory DIMM Capacity

16GB / 32GB / 64GB / 128GB ECC  
8 DIMM Slots

#### Total Storage

Up to 6 total drives<sup>2</sup>  
Up to 4 internal storage bays  
Max M.2 = 2 (4TB)  
Max 3.5" = 4 (16TB)

#### Storage Type Capacity

M.2 PCIe SSD up to 2TB  
3.5" SATA 7200rpm up to 4TB

#### RAID

Onboard M.2: 0/1  
SATA: 0/1/5/10

#### Power Supply

1000W, 92% efficient

### CONNECTIVITY

#### Front Ports

(2) USB 3.2 Gen 2 Type-A\*  
(2) USB 3.2 Gen 2 Type-C\*  
(1) Mic/Headphone Combo Jack

#### Rear Ports

(4) USB 3.2 Gen 2 Type-A\*  
(2) USB 2.0 Type-A  
(2) PS/2  
(1) RJ-45 10 Gigabit Ethernet  
(1) Audio Line-In  
(1) Audio Line-Out  
(1) Microphone-In

#### WLAN

Intel PCIe Wi-Fi Card with Bluetooth™  
External Antenna Kit (9260 AC)

#### Removable Storage

(1) 15-in-1 Media Card Reader<sup>3</sup>  
(1) Slim ODD<sup>2</sup>  
(1) Front Accessible Storage Enclosure<sup>3</sup>

#### Expansion Slots

(4) PCIe 4.0 x16 Gen 4  
(2) PCIe 4.0 x8 Gen 4

### SOFTWARE

#### Windows Preloads

Lenovo Commercial Vantage

### DESIGN

#### Dimensions (WxDxH)

(mm): 165 x 460 x 440  
(inches): 6.5 x 18.1 x 17.3

#### Weight

Max configuration: 52.91lbs (24kg)

### ISV CERTIFICATIONS

Adobe®, Autodesk®, AVID®,  
Altair®, AVEVA™, Bentley®, Dassault®,  
Nemetschek®, PTC®, Siemens®

### GREEN CERTIFICATIONS

ENERGY STAR® 8.0  
EPEAT®<sup>4</sup>  
GREENGUARD®  
RoHS Compliant  
80 PLUS® Platinum

For a full list of accessories and options, please visit:  
<https://accsmartfind.lenovo.com>

<sup>1</sup> Select versions available via preload

<sup>2</sup> Any combination of storage to equal maximum storage drives

<sup>3</sup> Optional

<sup>4</sup> Certification Available on Select Models; EPEAT registered where applicable. EPEAT registration varies by country. See [www.epeat.net](http://www.epeat.net) for registration status by country.

\* The actual transfer speed of the USB 3.2 Gen 2 will vary and, depending on many factors, such as the processing capability of host and peripheral devices, file attributes and other factors related to system configuration and your operating environments, will be slower than a speed of 10Gbit/s.

<sup>^</sup> For a full list of configuration details please visit: <https://psref.lenovo.com>

### RECOMMENDED SERVICES

Lenovo offers a comprehensive portfolio of services to support and protect your ThinkStation investment—so you can focus on your business, not your IT.

#### Premier Support

Bypass phone menus and scripted troubleshooting to access advanced-level technicians with the expertise needed to quickly diagnose and solve problems.

#### Warranty Upgrades—Onsite and Next Business Day

Maximizes PC uptime and productivity by providing convenient, fast repair service the next business day.

#### Warranty Extensions (1 to 5 years total duration)

This fixed-term, fixed-cost service helps you accurately budget for PC expenses, protect your valuable investment, and potentially lower the cost of ownership over time.

March 2022 ©Lenovo. All rights reserved. These products are available while supplies last. For any questions concerning price, please contact your Lenovo Account Executive. Lenovo is not responsible for photographic or typographic errors. Warranty: For a copy of applicable warranties, write to: Warranty Information, 500 Park Offices Drive, RTP, NC 27709, Attn: Dept. ZPYA/B600. Lenovo makes no representation or warranty regarding third-party products or services. Trademarks: Lenovo, the Lenovo logo, ThinkStation, ThinkVision, and Vantage are trademarks or registered trademarks of Lenovo. Microsoft and Windows are registered trademarks of Microsoft Corporation. AMD, the AMD Arrow logo, AMD Threadripper Pro and combinations thereof are trademarks of Advanced Micro Devices, Inc. in the United States and/or other jurisdictions. Bluetooth is a trademark of its proprietor and used by Lenovo under license. ENERGY STAR is a registered trademark of the U.S. Environmental Protection Agency. NVIDIA, the NVIDIA logo, and NVIDIA RTX are trademarks and/or registered trademarks of NVIDIA Corporation in the United States and other countries. Linux is the registered trademark of Linus Torvalds in the U.S. and other countries. USB Type-C and USB-C are trademarks of USB Implementers Forum. Other company, product, and service names may be trademarks or service marks of others.

AMD  
THREADRIPPER  
PRO

Lenovo