



# ROCKET NVMe PCIe M.2 2280 SSD

HIGH PERFORMANCE M.2 PCIe GEN3 X 4 SOLID STATE DRIVE



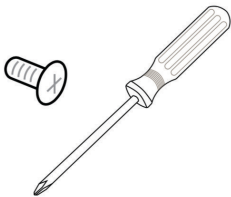
SABRENT ROCKET SERIES INSTALLATION GUIDE

## SABRENT ROCKET NVME M.2 DESKTOP INSTALLATION GUIDE AS A PRIMARY DRIVE (NEW SYSTEM)

Installation by a professional desktop computer technician is recommended. Before continuing with the installation process, it is your responsibility to review any warranty policy and instructions provided by your motherboard and computer manufacturer to ensure you follow proper procedures to install your storage device. Some manufacturers may void or limit your motherboard or computer warranty if you proceed with the installation of a new storage device. Accordingly, by proceeding with any installation, you agree to be solely responsible for any failure to follow any manufacturer's instructions.

### Required Tools and Parts

1. Screwdriver appropriate to the type of screw used for fastening the M.2 device, and the appropriate screwdriver or tool for opening your desktop computer.
2. One screw for fastening the M.2 device to the motherboard.

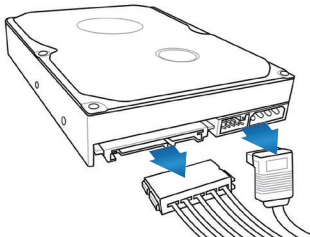
**Note:**

The necessary screw or hardware for fastening an M.2 device to the motherboard may have been included with your motherboard. If this has not been included, contact your motherboard manufacturer or computer system manufacturer for this information.

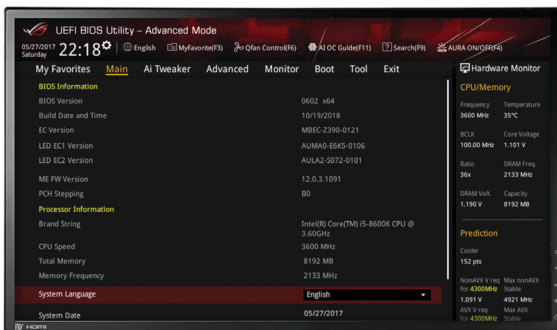
**Note:**

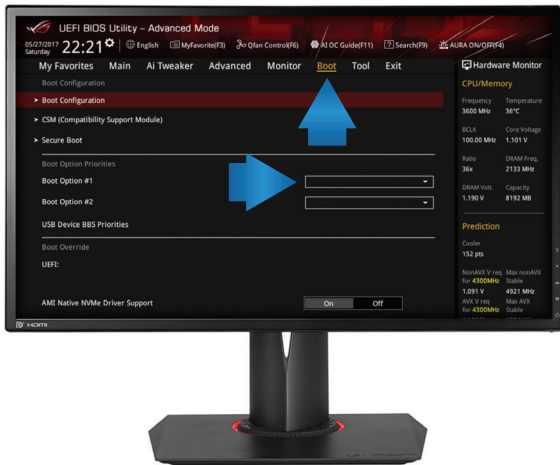
Depending on the type of hardware used by your motherboard to fasten an M.2 device, a motherboard style stand-off screw may be required and may be included with your motherboard.

1. As a precaution, always back up your data to another storage device before you or anyone else begins any type of work on your computer system.
2. Disconnect and remove any existing storage devices connected to the motherboard or in the drive bay(s).



3. Power on your PC and access the motherboard BIOS. Accessing your motherboard BIOS requires the press of a key or combination of keys on your computer system's attached keyboard during the preliminary stages of your computer system boot process. Reference your motherboard or system manufacturer for the exact keyboard sequence.





4. Once you have accessed the BIOS, make sure that a PCIe device is set in the BIOS boot sequence or boot priority list.

Reference your motherboard user manual or computer system user manual for information regarding the boot sequence and detecting boot devices, for booting from an M.2 device.

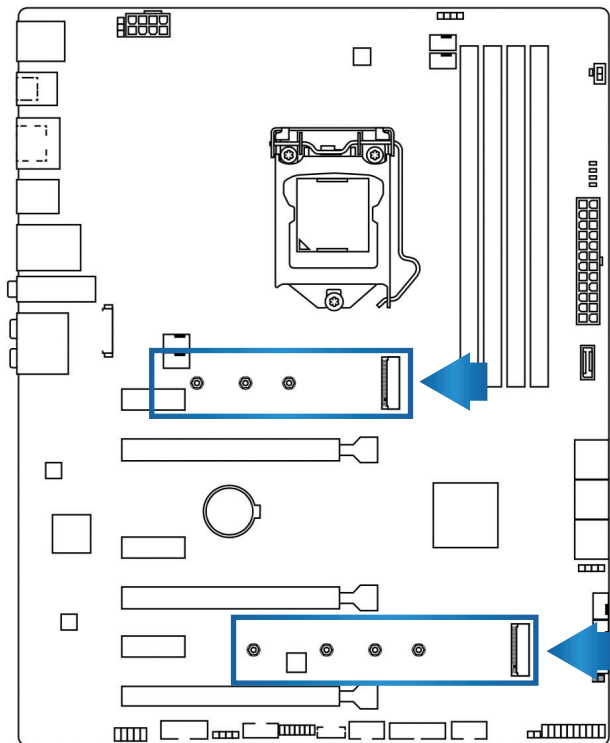
5. Save these BIOS settings and exit.

6. Power down your PC.

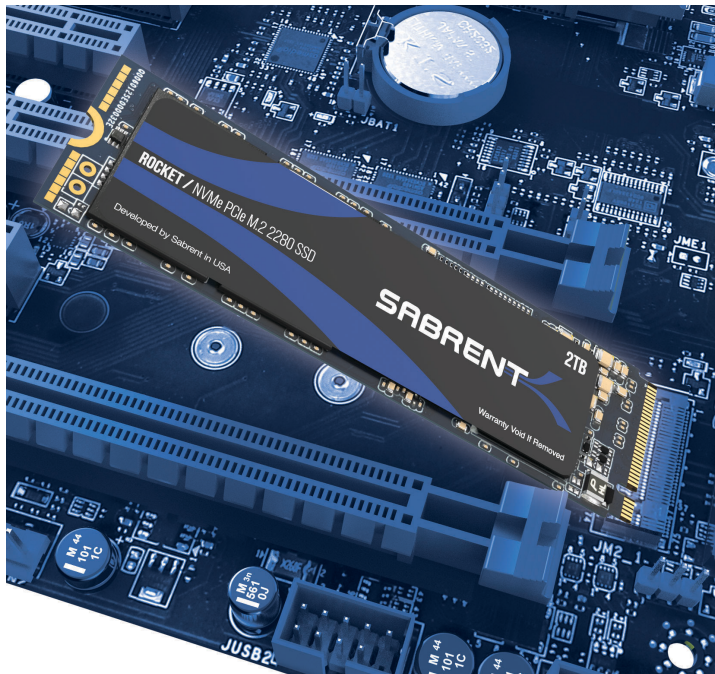
This may require disconnecting the power cord from your PC. Confirm with your system or motherboard manufacturer for the best power-down process when connecting new hardware to the motherboard.

7. Locate the M.2 slot on your motherboard.

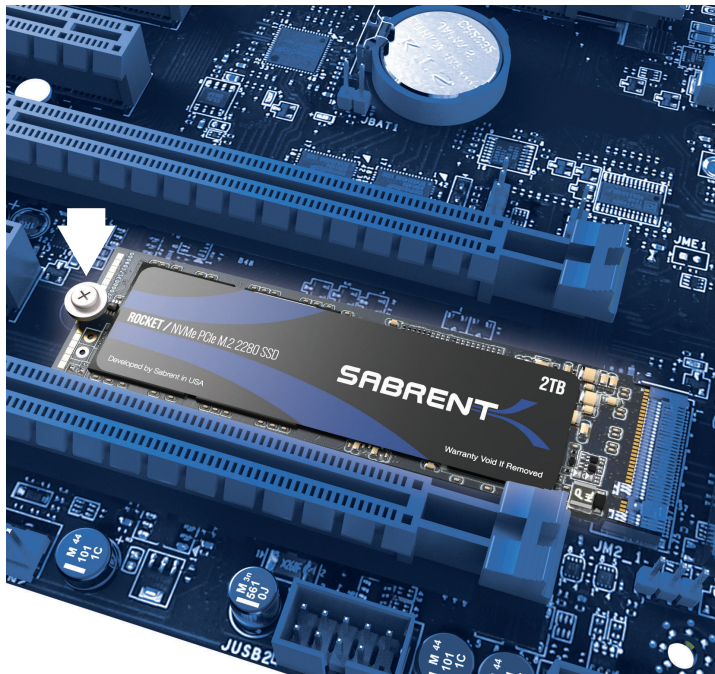
Please reference your motherboard user manual for detailed location and orientation of the M.2 slot.



8. Insert the **Sabrent ROCKET NVMe M.2 SSD** device pin-side first into the M.2 slot as is illustrated below.



9. Fasten the opposite end of the **Sabrent ROCKET NVMe M.2 SSD** to the motherboard with the necessary screw or hardware, as is illustrated below



10. Begin your Microsoft Windows installation  
 Microsoft Windows® 8.1 or Microsoft Windows® 10 is recommended for proper PCIe / M.2 boot and installation support.

## SABRENT ROCKET NVME M.2 INSTALLATION GUIDE AS A SECONDARY DRIVE

1. Attach the **Sabrent ROCKET NVMe M.2 SSD** as a secondary drive and load Windows® from your existing drive.
2. In Windows 7® and earlier, open ‘Disk Management’ by right clicking on ‘Computer’ and selecting ‘Manage’, then ‘Disk Management’. In Windows 8® and later, move the mouse to the lower left corner of your desktop and right click on the **Start Icon**, then select ‘Disk Management’.
3. When Disk Management opens, a pop-up should appear and prompt you to initialize the SSD.
4. Select MBR (Master Boot Record) or GUID partition table (GPT) and click OK. MBR is best for certain legacy software compatibility, while GPT is better for modern systems.
5. Right click in the area that says **Unallocated** and select **New Simple Volume...**
6. The **New Simple Volume Wizard** will open, click **Next**
7. Leave the Specify Volume Size as the maximum (default value) and click **Next**
8. Select a **Drive Letter** and click **Next**
9. In the **Format Partition** screen, decide on a **Volume label** (the name you want to give the drive) and click **Next**

The drive is now formatted and ready for use







**Please contact our Technical Support Team  
for additional troubleshooting**

[WWW.SABRENT.COM](http://WWW.SABRENT.COM)